

A Software Engineering Company

CONSULTING | DIGITAL TRANSFORMATION | IT SERVICES



Gateway Group

WWW.THEGATEWAYCORP.COM

CONNECT. INNOVATE. TRANSFORM.

OUR GROUP

A Privately held Global Enterprise, Established in 1997

The Gateway Corp, is a privately held global enterprise, head-quartered in India and The Netherlands. Gateway Group consists of 14 independent businesses representing 4 brands (Gateway Digital, AutoFacets, DiLX & AutoDAP) across 5 continents through its onground presence in 16 countries.

OUR BUSINESSES

A Group of Independently Operated Companies

The group operates independently under the guidance and supervision of its board of directors and shareholders. It comprises of companies focused in disruptive innovation and research, Industry oriented technology consulting, pioneering business - technology platforms and software services inclusive of joint ventures and publicly listed companies .

OUR DNA

Deliver Tangible and Measurable Business Value, Globally

A group with an inherent DNA to deliver tangible and measure business value to enterprises globally. The core value system breeds the spirit to succeed and consistently perform in most demanding markets, under dynamically challenging situations.

Our Value System Stirs Conviction to Succeed

OUR CUSTOMERS VOUCH ON OUR ABILITY TO DELIVER EXCEPTIONAL AND MEASURABLE BUSINESS VALUE

- We started in 1997, the toughest time for the global IT Industry
- We grew faster during recessions simply by delivering measurable business values and helping our customers grow
- We believe in optimizing, not just for our customers, but also for ourselves
- We maintain perfect symmetry between utilizing resources and optimizing business effectiveness for customers



OUR VISION

Consistently deliver ingenious, comprehensive, efficient, cost-effective Business solutions through IT for global market by creating a professionally stimulating and happy environment for our team where professionals thrive alongside the growth of our company.



OUR MISSION

Skillfully applying the most sought-after, fast-growing pertinent technology to yield total solutions in the most critical business areas.



OUR MOTIVATION

Gateway Group's entrepreneurial genome is its key differentiation. Our customers globally have experienced the founding principles of Integrity, Ethics, and Commitment that has inspired the group to outperform challenges over the past two decades. On an equitable landscape of skills, expertise and track record and a strong belief in our value system, empowers the group, in all its ventures and brands to succeed.

We Keep Your Most
Expensive Business
Decisions Profitable.
Since 1997



7
Development
Centers



ZERO DEBT
Zero Investors, &
Zero Liabilities
Since Inception



20+ Fortune
500 Customers with
80%
Repeat Business
from Existing Customer



30+
Serving Customers in
30+ Countries and
5 continents



20
Strategic
Initiatives



16
Countries
Global Reach



14
Nationalities
Professionals

Corporate Headquarters

THE NETHERLANDS

Maria Montessorilaan 5,
2719 DB Zoetermeer

INDIA

B/81, Corporate House,
Ahmedabad - 380054. India.

Development Centers

NETHERLANDS

INDIA

Ahmedabad	Gandhinagar SEZ
Baroda	Jaipur
Mumbai	Pune

Client Servicing Offices

EUROPE

The Netherlands, Belgium, Denmark, Norway,
Sweden, Finland, Iceland, France, Germany & UK

NORTH AMERICA

Canada, United States

MIDDLE EAST, AFRICA

UAE and South Africa

APAC

India and Japan



Fostering growth by uplifting each other and putting our best foot forward. **Meet our driving force.**



Prof. C.B. Gemawat

Founder &
Executive Director



Niraj Gemawat

Founder, Chairman
& Group CEO



Indrajeet Mitra

Founder & Board Member,
CEO AutoDAP & CEO G'SecureLabs



Vipin Moharir

Founder & Board Member,
Group Chief Strategy Officer



Rahul Ganatra

Group Chief Executive - EMEA



Pratik Mehta

Group COO & CSO
North America



Abhishek Verma

Group Chief Strategy
& Digital Officer



Ashit Shah

CEO, AutoFacets



Ola Hammarlund
CEO, Sweden



Mikael Fagerholm
CEO, Finland



Vilas Nagar
CTO, AutoFacets



Steve Covers
CEO, UK



Alf Lande
CEO, Norway



Elvar Thorkelsson
CEO, Iceland



Conan Khan
CEO



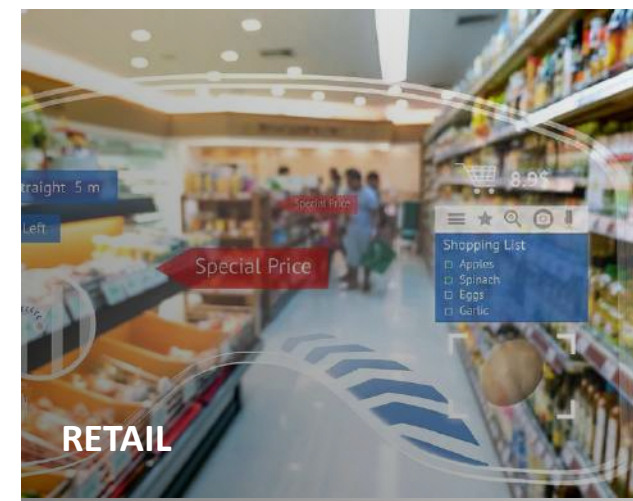
Sameer Pradhan
CTO, AutoDAP



Lina Budhwani
Group CFO



Harry Luijk
Commercial Director
(CCO), DiLX





Enterprise Solutions for Digital Transformation



YOUR DIGITAL AUTOMOTIVE PARTNER



THE REGIONAL CAR PARC - SIMPLIFIED



End to end Logistics
Innovative Partner



Information & Cyber
Security Consulting Services



Right Person for the Right Job



Design Led Methodology for
Digital Transformation

CERTIFICATION & COMPLIANCES



MSE 2



27001: 2013



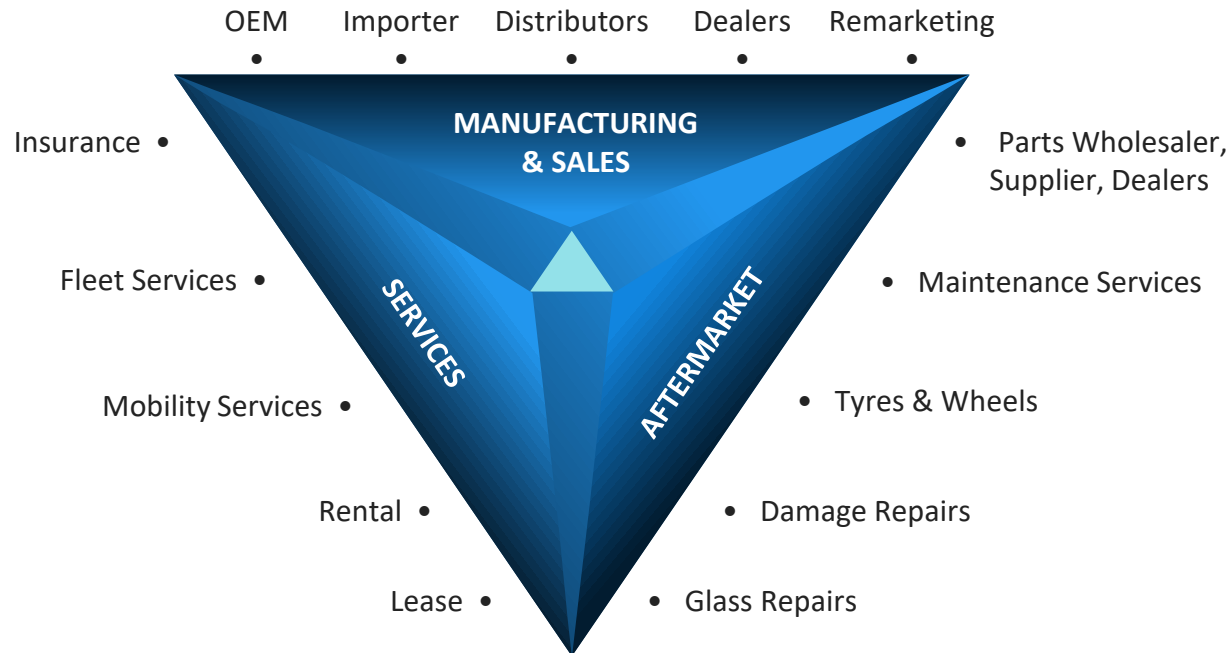
Driven by passion for automotive, also known as a partner with a difference in the automotive world!

350+
SOLUTIONS

70+
AUTOMOTIVE
CUSTOMERS

45
PARTNERS

16
COUNTRY
OPERATIONS



WE DELIVER VALUE WITH

Domain Experience | Business Solutions | Technology Expertise

Top Co-innovation and Co-creation partner to the **World's Top 50 Automotive enterprises**

Leader in Automotive Aftermarket Segment

100 and more automotive professionals serving more than **70 global customers**

Innovation Focus : Automotive • IOT • Big Data
Machine Learning • Artificial Intelligence
Augmented Reality • Cloud Enablement

Thought leadership in creation of new Digital Service Models, providing vital Tactical & Technological edge

www.autofacets.com

Vehicle Identification to Parts Accuracy - to reduce up to 80% rate of return

40+
AUTOMOTIVE
OEM BRANDS

168
MILLION+ VIN'S

8.6
MILLION PARTS

91,000+
CAR MODELS

Transforming the Independent Aftermarket

AutoDAP provides API driven DaaS Subscription for the Automotive Aftermarket. Owing to our extensive knowledge and a unique understanding of the European automotive market, we help businesses transform faster by providing accurate and effective data that leads to improving the process efficiency, minimizing risks and improving profitability.

*Data is reshaping the Automotive Aftermarket industry, yet most of the Aftermarket organizations are not able to get the expected outcomes from their existing data sources and digital assets. **Are you looking forward to enhance output of existing catalogues, Improve parts identification and quote Accuracy, Reduce parts returns?***



DaaS






- License Plate to Basic Vehicle Information (LPBVI)
- Precise Vehicle Identification and Build Sheet (VINVIS)
- WLTP (VINVIS +)
- OE Parts (VISOEP)
- Repair & Maintenance Information (VISRMI)



SOLUTIONS

- AI Driven Damage Assessment
- Service Calculator
- Virtual Dismantling
- Smart Repair & Maintenance
- Product Information Management

Benefits

-  Precise Information
-  Accurate Service
-  Competitive Pricing
-  Accurate Fitment
-  Value Addition

www.autodap.parts

Transforming Yesteryears' Legacies into Profitable and Remarkable Future

Key facts

- 10+ Industry Exposure
- 200+ Active Clients
- 50+ Public Sector Clients
- 1000+ Projects in Automotive
- 1500+ Projects in Europe
- 200+ Strategic Visioning Workshops

Recognition

- EU GDPR COMPLIANT
- ISO 9001:2015 and ISO 27001:2013 Certified Company
- MSE 1 Rating by Dun and Bradstreet

TRANSFORM PEOPLE. WORK. EXPERIENCE.



Technology
Transformation



Business Process
Transformation

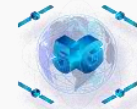


Strategy &
Digital Consulting

Our Capabilities



Smart Mobility



5G Technologies



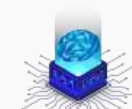
Augmented Reality



Extended Reality



Wearables



Cognitive AI



Machine Learning



Blockchain



Robotic Process
Automation



Big Data



Internet of Things



Cloud
Transformation



Cyber Security



Strategic
Intelligence

www.thegatewaydigital.com

Logistics Chain real-time control with Customized services from assessment to ROI

3 Mn.

ORDERS
PROCESSED

120+

SOLUTIONS/
PRODUCTS

85%

REPEAT
BUSINESS

Segments we serve



NVOCC



3PL/4PL



WAREHOUSING



TRUCKING &
TRANSPORTATION



LAST MILE
DELIVERY



PUBLIC
TRANSPORT



E-COMMERCE
LOGISTICS



REVERSE
LOGISTICS



AIR, MARITIME
& RAIL

Products & Solutions

- Customer Interaction Platform
- Control Tower
- Market Place
- Transport Management System
- Warehouse Management System
- Freight Management System

We work with the **World's Largest NVOCC**, Freight Forwarders and Trucking companies

Reduced total cost of innovation with the help of offshore development centers and onsite presence

3 Million Orders processed every year through our Enterprise fleet and transportation solutions in **12 Languages**

World class technology solutions based on Open Source, Microsoft Technologies and Cloud

www.dilx.co

Protect Your Business Data From Known and Unknown Cyber Threats 24x7

We Secure

- Brand Image & Reputation
- Revenue Loss Due to breach
- Private Information Leakage
- Customer trust & information
- Intellectual Property Theft
- Productivity Loss

Why G'Secure Labs

2 CSOC Operations with 30 Experts and 10 Security Evangelists

EU-GDPR COMPLIANT • **20+ Strategic** Security Partnerships

MDR and enhancement projects for **100+** clients across industries

Securing Data and Networks of **Top 100 corporates** for the last 20 years

Distributor and Value added reseller for **17 Global OEMs**

Certification & compliances



Partners



Segments we serve

Automotive

Pharma

Energy Sector

Financial Services

Healthcare

Legal Services

Transportation

Info. Technologies

Telecom

www.gsecurelabs.com

3T Advantage: Transform, Talent and Technology. *Anywhere*



Temporary
Staffing



Permanent
Placement



Competence
Centre Setup

Our Advantages

Ability to Identify and Place Right Talents in the most culturally complex business scenarios

16 On-ground Presence including countries like Iceland, Nordics, UK and Benelux regions

ICT & Legal Compliances at local levels for faster VISA process to ensure quick placements

IT Staffing Global Presence with 'on ground' operations along with local teams & partners

IT Outsourcing Off shore advantage

Impact: **Exceptional Results**



Increases the speed of hiring



Improves new hire performance



Reduces staff turnover



Reduces exposure to 'inappropriate hires'



Reduces bias in the hiring process




Ensures an outstanding candidate experience

www.tec-bridge.com

Uncomplicate Your Digital Spaghetti World!



Engineered by the Research team of
 **Alvarium Institute.**

Inspired by the voice of more than
5000 Customers across **30+ Countries** serviced over Two Decades.

\$ 1.2 BN

BUSINESS VALUE
DELIVERED TO
OUR CUSTOMERS

340+

WORKSHOPS
CONDUCTED

Why to Transform

Exploring The Business

Vision & Mission
Strategic Objectives & Initiatives
Business Assessment Canvas
Critical Success Factors & KPIs

What to Transform

Finding Missing Pieces

Digital Landscape Assessment
Problems & Challenges Discovery

Connecting The Dots

Solution Mind Mapping Areas of Innovation Business Case for Transformation

When to Transform

Prioritization

Functional Requirements Elicitation
Business Urgency and Impact Mapping
Implementation Roadmap

How to Transform

Visualize & Show

Technology Mapping
Rapid Prototyping

Our Advantages

- Brings in Innovation Culture in the Organization
- Practical insights to Stakeholders about the Organization's Growth Path
- Reduces Risks with Collaborative Workshop Engagement
- Identifies Core Problems and helps rectifying them
- Gain a Different Perspective to Digital Transformation
- Clear Roadmap to your Digital Transformation Journey
- Enabling to Stay ahead of the Curve by achieving your Goals & Objectives
- Crafting Solutions tailored to your Customer's Needs
- Helping you to stay relevant to Changing Mkts & Customer Expectations

www.thealvarium.com

Actionable Analytics powering Global business insights every 5 minutes



Less than **100ms** of Data compute time achieved

1 Million annual cost advantage delivered using our logistics analytics

More than **25,000 users** using our Healthcare analytics

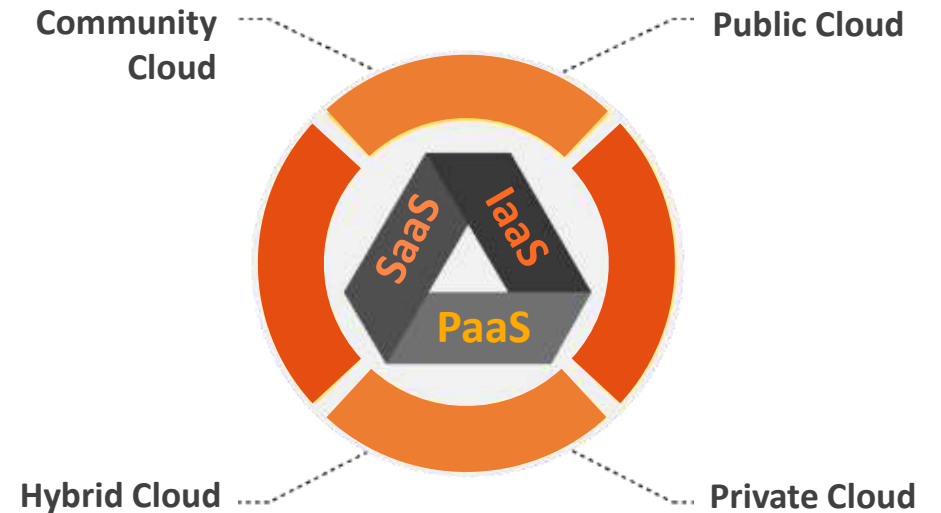


Reduced 25% in Migration Cycles and 40% in Capex for One of the Largest HRM Services in Europe

150 Brilliant Cloud computing professionals

Managed and deployed over **17 active Cloud Engagements**

Accelerated time to market with proven framework and execution approach



Delivering Game-Changing, Cost-effective Applications Faster than Competition



Application
Development



Legacy
Migration



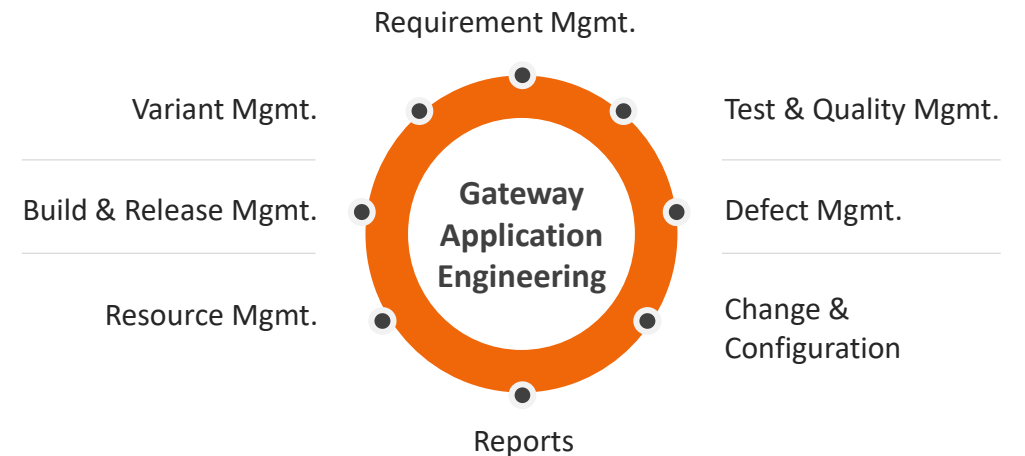
Enterprise
Development

End-to-end solutions to **Fortune 500 companies**

Cloud First solution for **World's 3rd Largest Automobile Manufacturer**

Europe's first HRM solution with a cloud first & mobile first strategy
with End-to-End legacy migration

Best Industry practices using Agile, Scrum & Kanban



**TOGETHER WE DREAM –
THE SAME DREAM
AND LIVE IT EVERYDAY**



Corporate Headquarters

THE NETHERLANDS

Maria Montessorilaan 5,
2719 DB Zoetermeer

Tel: +31 (0) 79 3200 980

INDIA

B/81, Corporate House,
Ahmedabad - 380054. India.

Tel: +91 79 2685 2554 / 55 / 56

E-mail: gateway@thegatewaycorp.com

Serving Clients in 16 Countries

 BELGIUM

 CANADA

 DENMARK

 FINLAND

 FRANCE

 GERMANY

 ICELAND

 INDIA

 JAPAN

 NORWAY

 SOUTH AFRICA

 SWEDEN

 THE NETHERLANDS

 UAE

 U.K.

 U.S.A